

# Attachment A1 - COURSES

## BAY RACE STANDARD COURSES

One lap of a standard course will consist of a circuit of buoys listed as follows:-

- A:- Start South about, **SL,8,2,7,6,4,3,FL** - all buoys to port (Diamond port)  
B:- Start North about, **SL,3,4,6,7,8,FL** - all buoys to stbd. (Diamond stbd)  
C:- Start South about, **SL,8,2,3,6,4,3,FL** - all buoys to port. (North triangle port)  
D:- Start North about, **SL,3,4,6,3,2,8,FL** -all buoys to stbd. (North Triangle stbd)  
E:- Start South about, **SL,8.2.3,6,5,3,FL** - all buoys to port. (Mid Triangle port)  
F:- Start North about, **SL,3,2,5,6.3.2,8,FL** -all buoys to stbd. (Mid Triangle stbd)  
G:- Start South about, **SL,8,2,7,6,2,3,FL** - all buoys to port (South Triangle port)  
H:- Start North about, **SL,3,2,6,7,2,8,FL** - all buoys to stbd. (South Triangle stbd)  
I:- Start South about, **SL,8,2,3,4,3,FL** - all buoys to port (Scalby & back port)  
J:- Start North about, **SL,3,4,3,2,8,FL** - all buoys to stbd. (Scalby & back stbd)  
K:- Start South about, **SL,8,2,3,5,2,3,FL** -all buoys to port. (Easterly & back port)  
L:- Start North about, **SL,3,2,5,3,2,8,FL** -all buoys to stbd. (Easterly & back stbd)  
M:- Start South about, **SL,8,2,3,6,2,3,FL** -all buoys to port. (Wheatcroft & back port)  
N:- Start North about, **SL,3,2,6,3,2,8,FL** -all buoys to stbd. (Wheatcroft & back stbd)  
O:- Start South about, **SL,8,2,7,8,2,3,FL** -all buoys to port. (Cayton & back port)  
P:- Start North about, **SL,3,2,8,7,2,8,FL** -all buoys to stbd. (Cayton & back stbd)  
W:- See 5.7 Windward – Leeward course instructions.  
X:- Any course announced via VHF detailing order of marks and side to be left.

Note:- Buoy 5a may be substituted for buoy 5, to be announced by VHF.

Marks in bold denote turning marks, those in italics are exclusion marks to be left on the same side.

## BAY RACE WINDWARD - LEWARD COURSE

A mark will be laid to give a windward leg either from or to the appropriate turning mark in the start area, approximate bearing and further instructions to be announced by the race station.

Marks to be left either to Port or Starboard as designated by a board displayed at the race station.

Boats will start then sail to the first turning mark (No3 or No8) then start a sequence of windward/leeward loops between their chosen mark and either the No 3 or No8 mark. Last lap to include (no8 or No3) then proceed to the finish line.

## ALTERNATIVE COURSES

Alternative courses additional to the above may be announced by VHF CH37 including mark rounding instructions, Code flag "L" will be flown. Board "X" to be displayed at the Race Station. It is advised that a means of writing down the course is made available.

## COASTAL RACE COURSES

The Course will be selected from the list below and indicated by a numeral board at the Racing Station.

- Course 1 Start North about, leave No3 to starboard, to Whitby bell buoy, round 32 NM approx  
to port, leave No3 to port finish North to South.
- Course 2 Start South about, leave No8 to port, to Filey bell buoy leave to 31 NM approx  
starboard, to North Smithic bell buoy round to port, to Filey bell buoy,  
leave to port, leave No8 to starboard Finish South to North
- Course 3 Start North about, leave No3 to starboard, to Scalby Outfall buoy, 32 NM approx.  
round to starboard, leave Nos 3, 2 & 8 to starboard, to Filey bell buoy,  
round to starboard, leave No8 to starboard Finish South to North;  
Two laps.
- Course 4 Start South about, leave No8 to port, to Filey bell buoy, round to Port, 32 NM approx.  
leave Nos 8, 2 & 3 to port, to Scalby Outfall buoy, round to port, leave  
No3 to port, finish North to South. Two Laps.
- Course 5 Other courses may be made announced by VHF prior to the 10 minute signal.

Races may be shortened to finish at any Course Buoy. This will be announced on VHF channel 37. Yachts shall be deemed to have finished on rounding the buoy on the required side, turning on the mark and recrossing the course from the previous mark. Yachts to take their own time when passing each buoy and note any yachts ahead and astern. See SYC SI 15.3 and 15.3.1

## Attachment A2 - BAY RACE BUOYS

### APPROXIMATE POSITION OF MARKS

No1-	Inner limit mark		
No2-	Outer limit mark - Staff, Black flag	054°16.8N	000°23.0W
No3-	North turning mark - Staff, Orange flag	054°17.0N	000°22.7W
No4-	Scalby outfall – Red Can	054°18.6N	000°23.4W
No5-	SYC Easterly mark – Yellow Spar Buoy	054°17.0N	000°22.0W
No5a-	SYC Outer mark - Staff, Orange flag	054°17.3N	000°20.7W
No6-	Wheatcroft outfall – Yellow Can	054°16.3N	000°20.5W
No7-	SYC Cayton mark – Yellow Spar Buoy	054°15.7N	000°21.5W
No8-	South turning mark - Staff, Orange flag	054°16.7N	000°23.2W
No9-	Filey Bell Buoy – E Cardinal	054°12.7N	000°14.6W
“M”	Middle Mark- Red Blobber	054°16.6N	000°22.1W

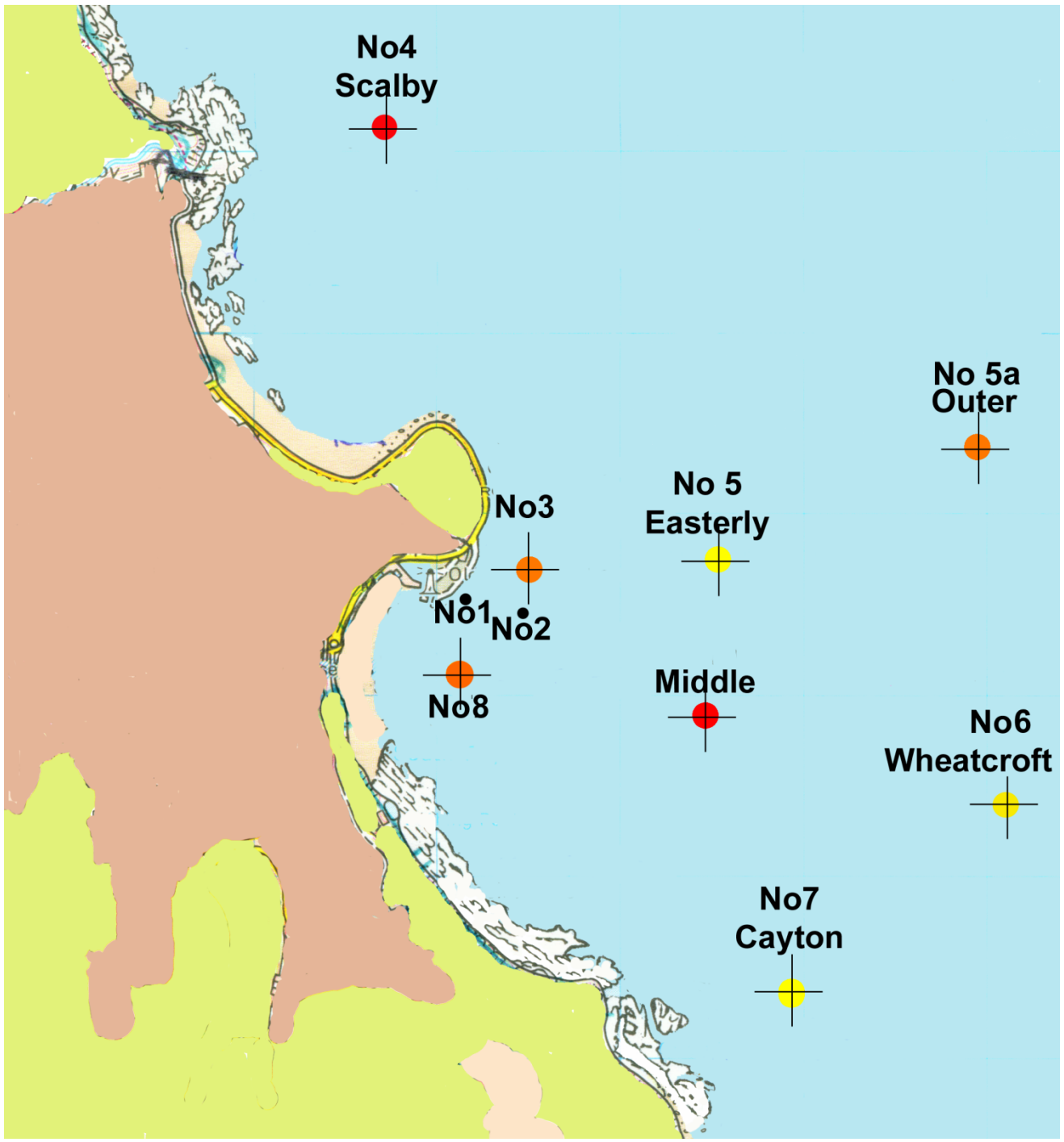
Temporary marks may be laid and will be identified by VHF prior to the start.

### APPROXIMATE BEARINGS TO MARKS

No3 TO NO 4 SCALBY	350
No3 TO NO5 EAST	090
No3 TO NO5A OUTER	080
No3 TO NO6 WHEATCROFT	120
No3 TO NO7CAYTON	155
NO4 SCALBY TO NO5 EAST	150
NO4 SCALBY TO NO5A OUTER	120
NO4 SCALBY TO NO6 WHEATCROFT	135
NO6 SCALBY TO No3	170
NO5 EAST TO NO4 SCALBY	330
NO5 EAST TO NO5A OUTER	070
NO5 EAST TO NO6 WHEATCROFT	130
NO5 EAST TO NO7 CAYTON	180
NO5 EAST TO No8	250
NO5 EAST TO No3	270
NO5A OUTER TO NO4 SCALBY	300
NO5A OUTER TO NO6 WHEATCROFT	170

NO5A OUTER TO NO7 CAYTON	210
NO5A OUTER TO No8	250
NO5A OUTER TO No3	260
NO6 WHEATCROFT TO NO4 SCALBY	315
NO6 WHEATCROFT TO NO5 EAST	310
NO6 WHEATCROFT TO NO5A OUTER	350
NO6 WHEATCROFT TO NO7 CAYTON	225
NO6 WHEATCROFT TO No8	285
NO6 WHEATCROFT TO No3	300
NO7 CAYTON TO No8	315
NO7 CAYTON TO No3	335
NO7 CAYTON TO NO5A OUTER	030
NO7 CAYTON TO NO5 EAST	000
NO7 CAYTON TO NO6 WHEATCROFT	045
No8 TO NO5 EAST/NO5A OUTER	070
No8 TO NO6 WHEATCROFT	105
No8 TO NO7 CAYTON	135

**Race Marks 2017**



## Attachment A3 - Additional starting information

### STARTING LINE

A Transit of the diamond on the Club Starting Station and the diamond on the outer pier in line.

### LIMIT MARKS

The start line is limited by limit marks as earlier set out. The ODM and IDM, which may be tide borne, form a starting gate and yachts must pass through this gate immediately before or after their Start.

Any boat not passing through the starting gate will be penalised and scored DNC without a hearing this changes A5.

PLEASE NOTE the No3 and 8 buoys are marks on the course FOR ALL RACES, except for boats sailing a windward/leeward course or course "X" where they may have the starting buoys omitted from their course except when starting or finishing and after the first rounding of No3 or 8, this will be announced by VHF. The purpose of buoys 3 and 8 when laid is to give the Race Officer a good view of boats approaching or leaving the start/finish line at the start, on completion of each lap and at the finish of a race. Therefore, after starting a race, boats are only permitted to round buoys 3, 8 on completion of each lap of the course and in the direction specified and should keep clear of the Start/Finish line at all other times, keeping East of the No2 buoy.

### STARTING SIGNALS - amends RRS 26

Yachts will start either together or in succession in the order of Classes as defined in Attachment A4 . Class 3, 4 AND 5 signals will be used if General Recalls are required.

SINGLE START. For a single start the following signals will be made from the Racing Station: -

SIGNAL	LIGHTS	HORN	MEANING
Warning signal	Yellow	One	10 mins to start
Preparatory signal	Yellow Green	One	5 mins to start
Starting signal	Lights OUT	One	START

MULTIPLE STARTS. For a succession of starts the following signals will be made:-

SIGNAL	LIGHTS	HORN	MEANING	CLASS
Warning	Yellow	One	10 mins	Class 1
Preparatory	Yellow Green	One	5 mins	Class 1
Warning			10 mins	Class 2
Starting	Yellow OUT	One	START	Class 1
Preparatory	Green Red		5 mins	Class 2
Warning			10 mins	Class 3
Starting	Green OUT	One	START	Class 2
Preparatory	Red Yellow		5 mins	Class 3
Warning			10 mins	Class 4
Starting	Red OUT	One	START	Class 3
Preparatory	Yellow Green		5 mins	Class 4
Warning			10 mins	Class 5
Starting	Yellow OUT	One	START	Class 4
Preparatory	Green		5 mins	Class 5
Starting	Green OUT	One	START	Class 5

The system will give signals for five Classes irrespective of any Class not starting or if a General Recall is not required. Signals for these Classes will be ignored in such cases. In the event of system failure lights prevail.

# Attachment A4 - Supplementary race information

## BAY RACES

### 6 CLASSES

6.1 Boats will start as multiple classes for Sunday Series Races.

6.2 Boats will start as a single class for Trophy Races

### 8.1 BAY RACE DESIGNATION

8.1.1 In class racing the Sportsboat class may elect to sail a windward/leeward course when the Cruiser classes sail a bay course. This will be announced by VHF and will follow the same mark roundings as the cruisers. See Attachment A3 Starting Buoys regarding variation from standard instruction.

8.1.2 A board bearing course letter W designates that the course will be a windward-leeward course for all classes as detailed in Attachment 1

8.1.3 A Standard Course will consist of up to 4 laps, a Windward-Leeward Course will consist of up to 6 laps unless shortened.

8.1.4 Shortened course to be indicated as detailed in RRS 32, this will be signalled as the lead boat in the relevant class approaches the No3 or No8 turning mark. For sportsboats sailing a windward leeward course shortening will be signalled as they approach the turning mark prior to starting the final lap and they will then proceed to their mark and finish as detailed in Attachment A1. This may be superseded by VHF instructions from the Race Station.

8.1.5 Reduced number of laps may be announced by VHF prior to the start without visual signal.

8.1.6 Races may be shortened to finish at any passing of a Course Buoy where practicable.

### 11 STARTING

11.1 The Start procedures as given in Attachment 3 will be used.

## MIDWEEK PURSUIT RACES

### 5 HANDICAPS

Handicaps will be posted on the Club Notice Board some time prior to each race.

5.1 Any handicap adjustments will be effective from the Race Number in which the adjustment is posted. If no new handicap is made in the column against a yacht, the handicap will remain the same as the last entry shown. Handicaps will increase by 4 minutes for a 1<sup>st</sup> place, 3 minutes for 2<sup>nd</sup>, 2 minutes for 3<sup>rd</sup> and 1 minute for 4<sup>th</sup>. Owners and skippers are responsible for being in possession of their current handicaps from the board. Handicaps are in multiples of half minutes only.

6 Yachts will race as one Class. Class Flag will be IC Numeral 1.

### 8 COURSES

The course will be a Pursuit Race of one Round of course E, F, G, H, I, J, K, L, M, N, O, P or X as described in Attachment A1.

### 11 STARTING

11.2 The Single Start procedure as given in Attachment A3 will be used, yachts starting on handicap taking their time from the Starting Signal.

11.2 Any boat not within its own five minute starting sequence must keep clear of other boats in theirs. Any yacht motoring within 5 minutes of their start time shall stop their engine and complete a two-turns penalty before starting. This applies to all pursuit races.

11.3 Recalls. (modifies SYC SI 11.2.1)

At the discretion of the RO, recalls may be made. These will be individual and made on VHF Ch 'M'. Any yacht starting before her handicap time and not answering a recall (if any) will be classed OCS.

## COASTAL RACES

### 5 CLASSES

Boats will race as one class using SYC Club Handicap.

### 11 STARTING

The Single Start procedure as given in Attachment A3 will be used.

### 18 PERSONAL LIFE JACKETS

Life jackets (not buoyancy aids) are to be worn on yachts with no guard rails for all coastal races.

20 Autohelmms may be used on coastal races only if sailing single or two handed.

## OFFSHORE, OPEN AND SPECIAL PURSUIT RACES

Special Race Instructions for these races will be available in the Clubhouse. The Special Race Instructions are in addition to these instructions, if there is an inconsistency or conflict the Special Race Instructions will take precedence.

## CREW LIMITATIONS

18.1 Except where class rules apply, there shall be no maximum number of crew whilst racing. Safety equipment shall be provided for all crew aboard